



Hornbeam Road, Epping, CM16

BUTLER & STAG



Situated in the heart of Theydon Bois is this stunning spacious four bedroom semi detached chalet bungalow, perfectly located for the village shops, pubs and restaurants and around a six minute walk to the Central Line Underground Station.

Freehold



- Semi-Detached Chalet Bungalow
- Spacious Open Plan Kitchen/Dining Area
- Cabin/Summer House
- Four Bedrooms/Two Bathrooms
- Off Street Parking
- Downstairs Family Bathroom

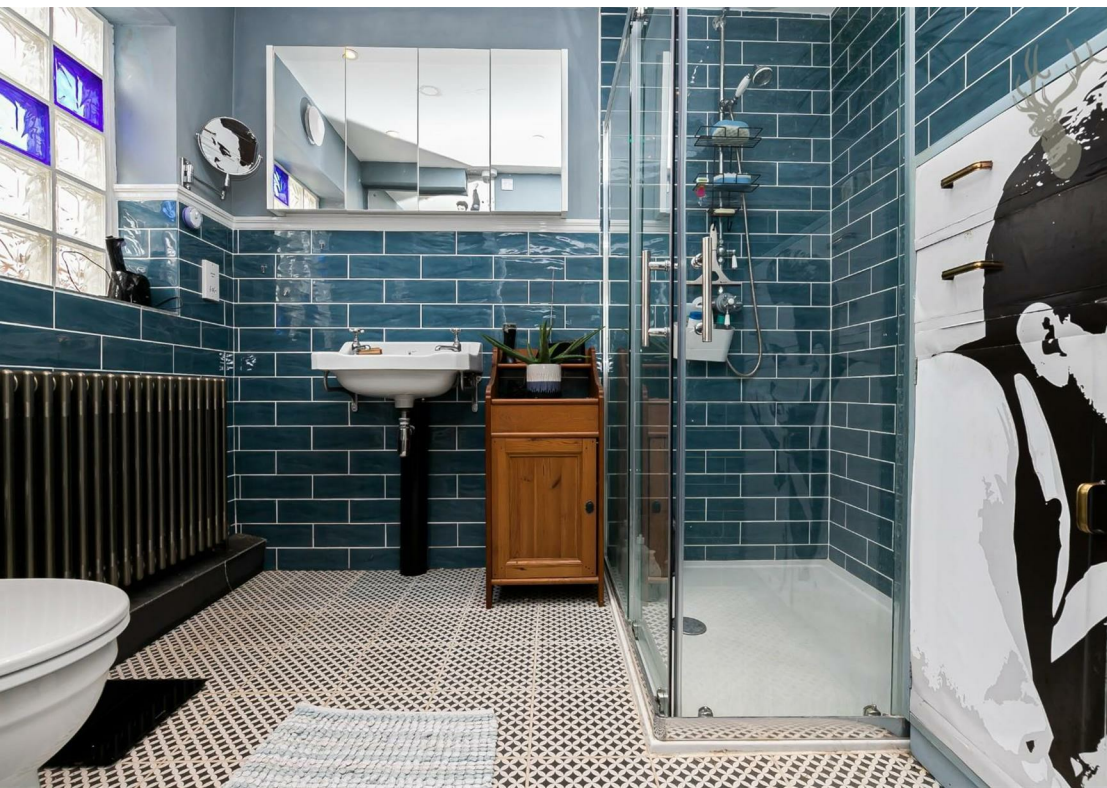
Accommodation consists of a large open plan kitchen/dining area, downstairs family bathroom, and two bedrooms.

The first floor you will find two more spacious bedrooms with a jack and Jill bathroom, with plenty of eaves storage.

Externally, the property boasts off street parking via the driveway, side access and a mature north-facing garden. With a separate detached garage which has been turned into half storage, half utility area. At the end of the garden, you will find a summer house/cabin which is perfect for the kids to enjoy in the summer or the winter.

Hornbeam Road is a much sought after turning in the ever-popular village of Theydon Bois. The village is arranged around the green and offers a parade of shops, pubs and restaurants and offers easy access into Epping Forest, with its deer sanctuary. Transport links into London are excellent. Theydon Bois underground station is in walking distance and there are several well regarded state and private schools within easy reach. Local leisure facilities include golf courses, sports centres and a tennis club.





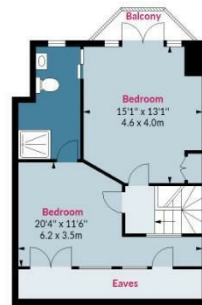
Hornbeam Road, CM16

Approx. Gross Internal Area(Including Balcony/ Storage) 1547 Sq Ft - 143.72 Sq M
Approx. Gross Internal Area(Excluding Balcony/ Storage) 1393 Sq Ft - 129.41 Sq M



Ground Floor

Floor Area 911 Sq Ft - 84.63 Sq M



First Floor

Floor Area 482 Sq Ft - 44.78 Sq M



Floor plan is for illustrative purposes only and is not to scale. Every attempt has been made to ensure the accuracy of the floor plan shown, however all measurements, fixtures, fittings and data shown are an approximate interpretation for illustrative purposes only.
lpaplus.com

BUTLER & STAG

BUTLER & STAG

☎ 01992 667666

🏠 4 Forest Drive, Theydon Bois, Essex, CM16 7EY

✉ theydon@butlerandstag.com

IMPORTANT NOTICE - These particulars have been prepared in good faith and they are not intended to constitute part of an offer or contract. We have not performed a structural survey on this property and the services, appliances and specific fittings have not been tested. All photographs, measurements, floor plans and distances referred to are given as a guide and should not be relied upon.

www.butlerandstag.uk